



# RIVER MURRAY WEEKLY REPORT

## FOR THE WEEK ENDING WEDNESDAY, 11 MARCH 2009

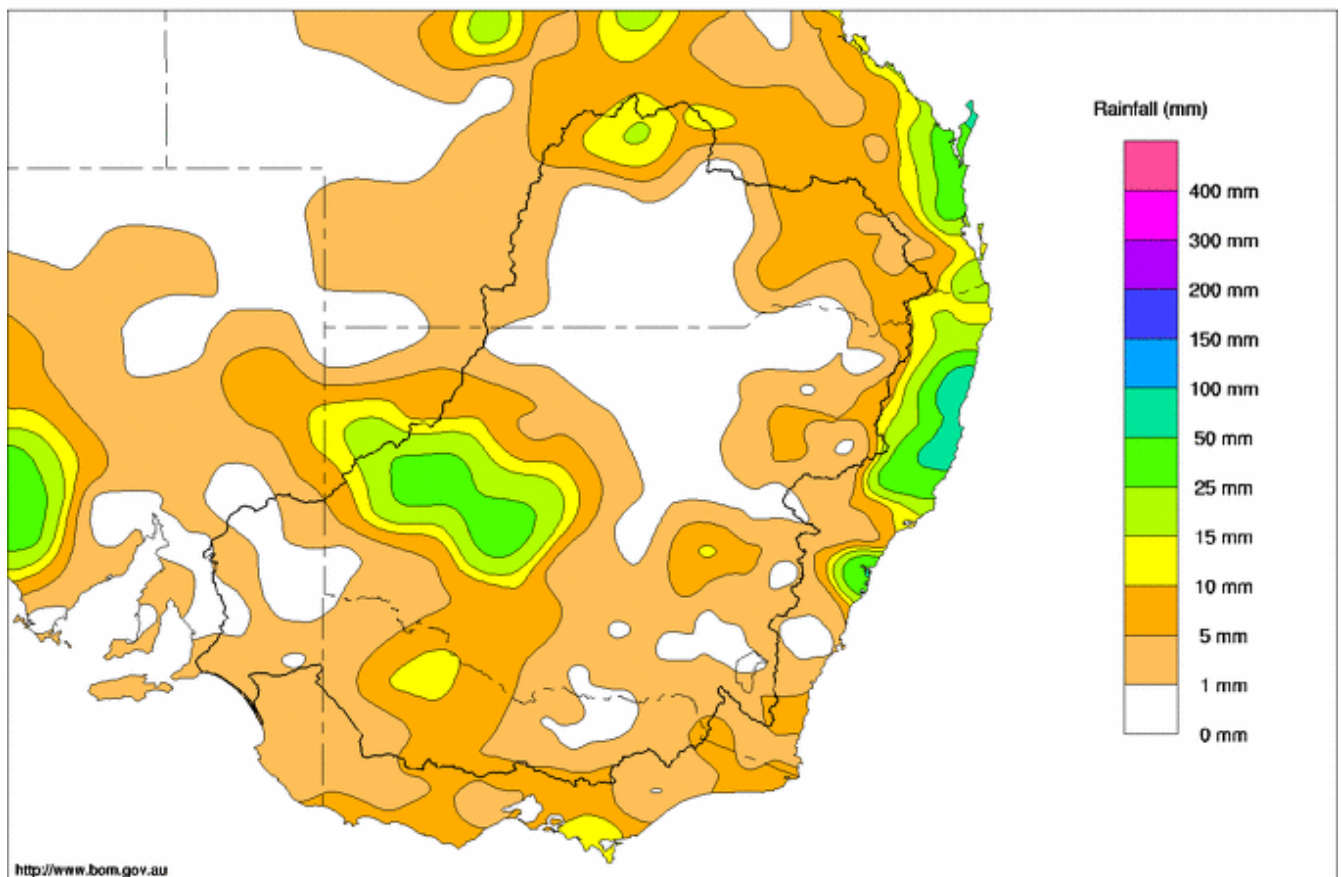
Trim Ref: D09/2842

13 March, 2009

### Rainfall and Inflows

During the past week most areas in the Murray-Darling Basin received only 0 – 10 mm of rainfall (see Map). The best falls were near Ivanhoe and Wilcannia in western NSW where over 30 mm was recorded. Overall, the southern half of the Basin continues to suffer from the very dry conditions experienced during the past 2 ½ months. As a result, streamflows in the upper Murray and its tributaries remain extremely low and Murray system inflows continue to track close to the historic minimum.

Murray Darling Rainfall Analysis (mm) Week Ending 11th March 2009  
Product of the National Climate Centre



© Commonwealth of Australia 2009, Australian Bureau of Meteorology

Issued: 11/03/2009



## River Operations

MDBA active storage continues to decline, and is currently at 1 062 GL (or 12 % capacity), which is slightly lower than this time last year (1 190 GL). There is an additional 226 GL (13 % capacity) in Menindee Lakes, which remains under NSW control.

Storage in Hume Reservoir, which is continuing to supply the bulk of downstream water requirements, decreased by 66 GL to 252 GL (8 % capacity). If conditions remain dry, Hume Reservoir is expected to drop below 150 GL (5 % capacity) over the coming weeks. The flow at Doctors Point (downstream of Hume and the Kiewa River) has been averaging 9 600 ML/day and is likely to remain fairly steady during the coming week. A red alert for blue-green algae in Hume Reservoir has been issued for Ebdon Reserve, Hume Dam Resort and the Hume Shire offtake. Further information can be obtained from the Regional Algal Coordinating Committee's freecall hotline on 1800 999 457.

Yarrowonga release has been reduced from 8 500 to 7 500 ML/day and is likely to remain fairly steady during the coming week. Further downstream, the release from Torrumbarry Weir is currently 6 500 ML/day, and during the coming week is expected to decrease slightly as the reduced flows from Yarrowonga arrive.

The NSW Department of Water and Energy has recommenced the stock and domestic replenishment flow for the Wakool River system (see attached media release). The decision was made in agreement with local landholders and NSW Fisheries, and the Department will continue to closely monitor water quality.

Menindee Lakes has received another 30 GL from the Darling River, bringing the total inflows during the past 3 weeks to about 130 GL. The NSW Government has announced that it is increasing the release from Menindee Lakes into the lower Darling River over the next few days, from 170 to 2 000 ML/day (see attached media release). This will avoid spill from Lake Wetherell, and according to current forecasts, around 12 000 ML will be released. Such a small volume is not being stored in Lake Pamamaroo as most would be lost to dead storage and evaporation during the autumn months. Upstream of Menindee Lakes the flow at Wilcannia remains steady at about 7 400 ML/day, but at Bourke the flow has now receded to 2 300 ML/day.

Lake Victoria storage is fairly steady at 161 GL (or 24 % capacity), and the flow to South Australia is steady at about 4 000 ML/day. Locks 1,2,3,5 and 6 are now close to, or slightly above, full supply level, while Lock 4 remains 5 cm below full supply level. During the past week the water level in Lake Alexandrina remained steady at about -0.9 m AHD.

**For media inquiries contact: Sam Leone on 02 6279 0141**

DAVID DREVERMAN  
Executive Director, River Murray



**Week ending Wednesday 11 Mar 2009**

**Water in Storage**

MDBA Storages	Full Supply Level (m AHD)	Full Supply Volume (GL)	Current Storage Level (m AHD)	Current Storage		Dead Storage (GL)	MDBA Active Storage (GL)	Change in Total Storage for the week (GL)
				(GL)	%			
Dartmouth Reservoir	486.00	3 906	418.30	858	22%	80	778	-4
Hume Reservoir	192.00	3 038	169.60	252	8%	30	222	-66
Lake Victoria	27.00	677	22.06	161	24%	100	61	-2
Menindee Lakes		1 731 *		226	13%	(- ) #	0	+26
<b>Total</b>		<b>9 352</b>		<b>1 498</b>	<b>16%</b>	<b>--</b>	<b>1 062</b>	<b>-46</b>

\* Menindee surcharge capacity 2050 GL

% of Total Active MDBA Storage = **12%**

# NSW takes control of Menindee Lakes when storage falls below 480 GL, and control reverts to MDBA when storage next reaches 640 GL

**Major State Storages**

Burrinjuck Reservoir	1 026	510	50%	3	507	-3
Blowering Reservoir	1 631	506	31%	24	482	-11
Eildon Reservoir	3 390	506	15%	100	406	-24

**Snowy Mountains Scheme**

Snowy diversions for week ending 10-Mar-2009

Storage	Active storage (GL)	Weekly change (GL)	Diversion (GL)	This week	From 1 May 2008
Lake Eucumbene - Total	553	n/a	Snowy-Murray	+7	561
Snowy-Murray Component	246	-	Tooma-Tumut	+1	215
Target Storage	1 410		Nett Diversion	6.0	346
			Murray 1 Release	+10	761

**Major Diversions from Murray and Lower Darling (GL) \***

New South Wales	This week	From 1 July 2008	Victoria	This week	From 1 July 2008
Murray Irrig. Ltd (Net)	5.5	100.5	Yarrawonga Main Channel (net)	2.0	77
Wakool System loss	0.5	30.2	Torrumbarry System + Nyah (net)	10.8	185
Western Murray Irrig.	0.5	21.7	Sunraysia Pumped Districts	2.0	90
Licensed Pumps	4.8	90.7	Licensed pumps - GMW (Nyah+u/s)	0.4	10
Lower Darling	0.1	9.8	Licensed pumps - LMW	6.2	115
<b>TOTAL</b>	<b>11.4</b>	<b>252.8</b>	<b>TOTAL</b>	<b>21.4</b>	<b>477</b>

\* Figures derived from Estimates and Monthly Data. Please note that not all data may have been available at the time of creating this report.

**Flow to South Australia (GL)**

Entitlement this month	186 *	
Flow this week	27.0	(3 900 ML/day)
Flow so far this month	45	
Flow last month	148	

\* Reduced to approx. 124 GL during March drought contingency operations

**Salinity (EC)**

(microsiemens/cm @ 25° C)

	Current	Average over the last week	Average since 1 August 2008
Swan Hill	50	50	70
Euston	120	130	90
Red Cliffs	110	100	130
Merbein	90	90	130
Burtundy (Darling)	660	650	430
Lock 9	130	140	220
Lake Victoria	270	310	260
Berri	360	360	370
Waikerie	-	-	490
Morgan	470	470	520
Mannum	670	670	620
Murray Bridge	660	730	620
Milang (Lake Alex.)	20	180	4 090
Poltalloch (Lake Alex.)	5 450	5 450	3 940
Meningie (Lake Alb.)	11 440	9 570	6 580
Goolwa Barrages	29 040	30 080	21 310



Week ending Wednesday 11 Mar 2009

River Levels and Flows

River Murray	Minor Flood stage (m)	Gauge height		Flow (ML/day)	Trend	Average flow this week (ML/day)	Average flow last week (ML/day)
		local (m)	(m AHD)				
Khancoban	-	-	-	980	F	1 590	1 680
Jingellic	4.0	1.09	207.61	740	F	1 360	2 350
Tallandoon ( Mitta Mitta River )	4.2	1.42	218.31	520	F	530	550
Heywoods	5.5	2.62	156.25	9 330	S	9 250	10 870
Doctors Point	5.5	2.58	151.05	9 830	R	9 630	11 190
Albury	4.3	1.57	149.01	-	-	-	-
Corowa	7.0	2.14	128.16	8 960	F	9 230	10 570
Yarrowonga Weir (d/s)	6.4	1.34	116.38	7 590	R	8 010	9 340
Tocumwal	6.4	1.84	105.68	7 480	F	7 890	8 990
Torrumbarry Weir (d/s)	7.3	2.03	80.58	6 050	S	6 320	6 510
Swan Hill	4.5	1.23	64.15	6 090	R	6 080	6 080
Wakool Junction	8.8	2.60	51.72	6 530	R	6 470	6 360
Euston Weir (d/s)	8.8	1.38	43.22	5 490	R	5 340	4 920
Mildura Weir (d/s)	-	-	-	5 830	F	5 450	4 700
Wentworth Weir (d/s)	7.3	3.01	27.77	4 760	R	4 510	3 700
Rufus Junction	-	2.93	19.86	3 420	F	3 420	3 660
Blanchetown (Lock 1 d/s)	-	-0.66	-	1 820	R	1 830	1 810
<b>Tributaries</b>							
Kiewa at Bandiana	2.7	0.61	153.84	130	R	110	120
Ovens at Wangaratta	11.9	7.55	145.23	100	F	120	120
Goulburn at McCoys Bridge	9.0	1.11	92.53	360	F	360	360
Edward at Stevens Weir (d/s)	-	1.29	81.06	1 060	F	1 130	1 160
Edward at Liewah	-	1.85	57.23	1 170	S	1 160	1 140
Wakool at Stoney Crossing	-	1.02	54.51	10	R	20	70
Murrumbidgee at Balranald	5.0	0.50	56.46	240	R	170	230
Barwon at Mungindi	-	3.38	-	380	F	670	980
Darling at Bourke	-	4.41	-	2 290	F	4 500	8 820
Darling at Burtundy Rocks	-	0.69	-	70	R	70	120

<b>Natural Inflow to Hume</b> (ie pre Dartmouth & Snowy Mountains scheme)	N/A	N/A
---	-----	-----

Weirs and Locks

Pool levels above or below Full Supply Level (FSL)

Murray	FSL (m AHD)	u/s	d/s		FSL (m AHD)	u/s	d/s
Yarrowonga	124.90	-0.20	-	No. 7 Rufus River	22.10	+0.00	+0.68
No 26 Torrumbarry	86.05	+0.00	-	No. 6 Murtho	19.25	-0.01	-0.02
No. 15 Euston	47.60	+0.01	-	No. 5 Renmark	16.30	+0.01	+0.04
No. 11 Mildura	34.40	+0.06	+0.17	No. 4 Bookpurnong	13.20	-0.05	+0.32
No. 10 Wentworth	30.80	+0.06	+0.37	No.3 Overland Corner	9.80	+0.00	+0.09
No. 9 Kulnine	27.40	+0.13	+0.09	No. 2 Waikerie	6.10	+0.00	+0.10
No. 8 Wangumma	24.60	+0.09	+0.50	No 1. Blanchetown	3.20	+0.03	-1.41

Murrumbidgee	FSL (m AHD)	relation to FSL	d/s gauge ht.		Flow (ML/day)
			local (m)	(m AHD)	
No. 7 Maude	75.40	-2.81	0.6578	70.0078	292
No. 5 Redbank	66.90	-3.95	0.197	61.497	312

Lower Lakes

FSL = 0.75 m AHD

	(m AHD)
Lake Alexandrina average level for the past 5 days	-0.91

Barrages

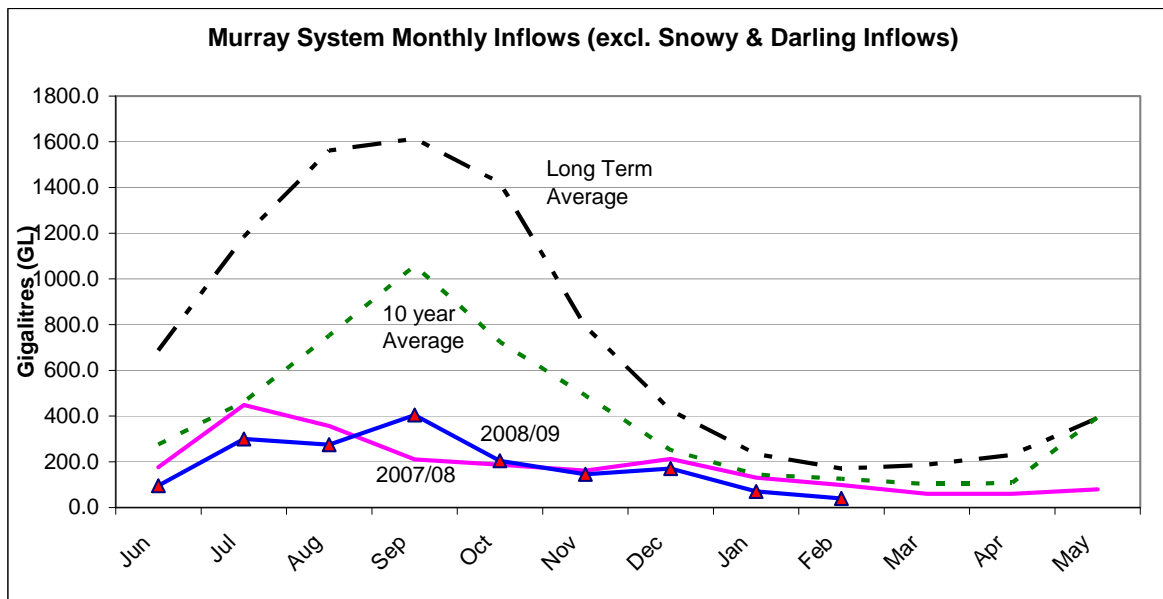
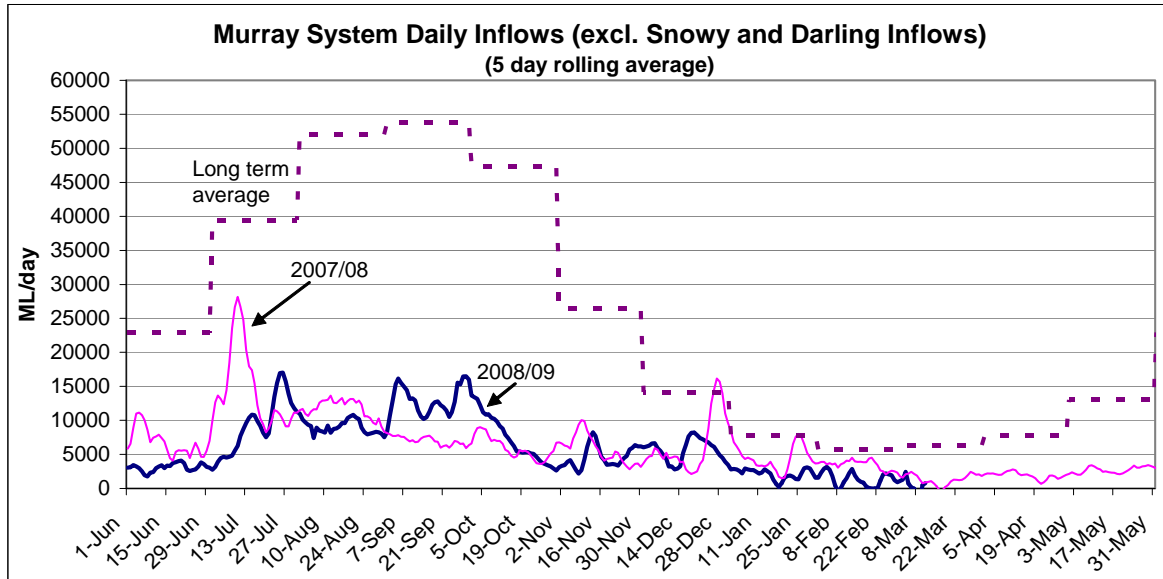
Fishways @ Barrages

	Openings	Level (m AHD)	Status	Rock Ramp	Vertical Slot
Goolwa	128 openings	-0.95	All closed	-	Closed
Mundoo	26 openings	-0.60	All closed	-	-
Boundary Creek	6 openings	-	All closed	-	-
Ewe Island	111 gates	-	All closed	-	-
Tauwitchere	322 gates	-	All closed	Closed	Closed

AHD = Level relative to Australian Height Datum, i.e. height above sea level



Week ending Wednesday 11th March 2009



**State Allocations (as at 11th March 2009)**

**NSW - Murray Valley**

High security	95%
General security	9%

**Victoria - Murray Valley**

high reliability	35%
------------------	-----

**NSW - Murrumbidgee Valley**

High security	95%
General security	21%

**Victoria - Goulburn Valley**

high reliability	31%
------------------	-----

**NSW - Lower Darling**

High security	100%
General security	50%

**South Australia - Murray Valley**

High security	18%
---------------	-----

NSW : [http://www.naturalresources.nsw.gov.au/mediarelnr/mr\\_toc\\_currnr.html](http://www.naturalresources.nsw.gov.au/mediarelnr/mr_toc_currnr.html)

VIC : <http://www.g-mwater.com.au/water-resources/allocations/current.asp>

SA : <http://www.dwlbc.sa.gov.au/media.html>



NSW Government

Department of Water & Energy

## Media Release

Thursday, 5 March 2009

---

**EMBARGOED until 5:30 am Friday, 6 March 2009**

### **Wakool River stock and domestic flow to recommence**

The NSW Department of Water and Energy said today that a planned stock and domestic replenishment flow for the Wakool River system would recommence on Monday.

The replenishment flow was postponed three weeks ago in response to two large fish kills in the Wakool River system, caused by reduced dissolved oxygen levels in the water due a record breaking heatwave.

“Dissolved oxygen levels and temperatures have returned to levels that are considered safe for fish and cooler weather is expected over for the next 10 days,” said the Department’s Deputy Director-General, David Harriss.

“This provides the ideal window of opportunity to release this much-needed stock and domestic water to landholders along the Wakool River system and to replenish pools that are still providing refuge for native fish.

“There are a hundred or so landholders who are at real risk of running out of water for their stock.

“Should this happen we would face a real crisis trying to water or move this stock to prevent losses.

“Refuge pools for native fish are also drying up and NSW Fisheries has advised that we need to get more water down the Wakool River system soon to replenish fish habitat.”

Mr Harriss said that the decision to release the remaining water into the Colligen/Niemur, Merran and Wakool/Yallakool systems had been made in agreement with local landholder groups and NSW Fisheries.

This decision has not been taken lightly and we’ve consulted the experts and local landholders to ensure that the risk of future fish kills is minimised.”

“Whilst we don’t anticipate further water quality problems, should this happen we have contingency plans in place to block and extract any back water flows and protect fish habitat.”

The Department will continue to monitor water quality closely and continue to consult with the Murray-Darling Freshwater Research Centre and NSW Fisheries.

For more information on flows and water levels, or to report a water quality issue, please contact the Duty Operations Officer at State Water’s Deniliquin office on (03) 5898 3925.

---

**Media contact:** Bunty Driver 03 58983910 mobile 0407 40 32 34

## LOWER DARLING RIVER FLOWS TO INCREASE

10 March 2009

Customers in the Lower Darling Valley are advised that from Wednesday 11 March, water flows from Menindee Lakes over Weir 32 will be progressively increased from the current rate of 170 ML/day to 2000ML/day by the middle of March.

State Water is increasing the releases under the direction of the Department of Water and Energy to avoid spilling of Lake Wetherell.

According to current forecasts, around 12,000 ML will be released. This small volume is not being stored in Lake Pamamaroo as most would be lost to dead storage and evaporation during the autumn months.

Customers are advised to consider the planned increases in flow when planning their activities and move stock and/or equipment if necessary.

Customers requiring further information on river flows can contact the Duty Operations Officer on (03) 5898 3925.

**Authorised by:**

Ned Hamilton  
Water Delivery Manager  
Southern

For **Water Delivery Announcements** and State Water Media Releases go to:  
<http://www.statewater.com.au/whanew/mediareleases.htm>

For **Available Water Determinations** and Department of Water and Energy Media Releases go to: [http://www.dwe.nsw.gov.au/water/avail\\_awd.shtml](http://www.dwe.nsw.gov.au/water/avail_awd.shtml)

For more information about **storage levels** and **river heights** go to the *Waterinfo Website* at <http://www.waterinfo.nsw.gov.au>