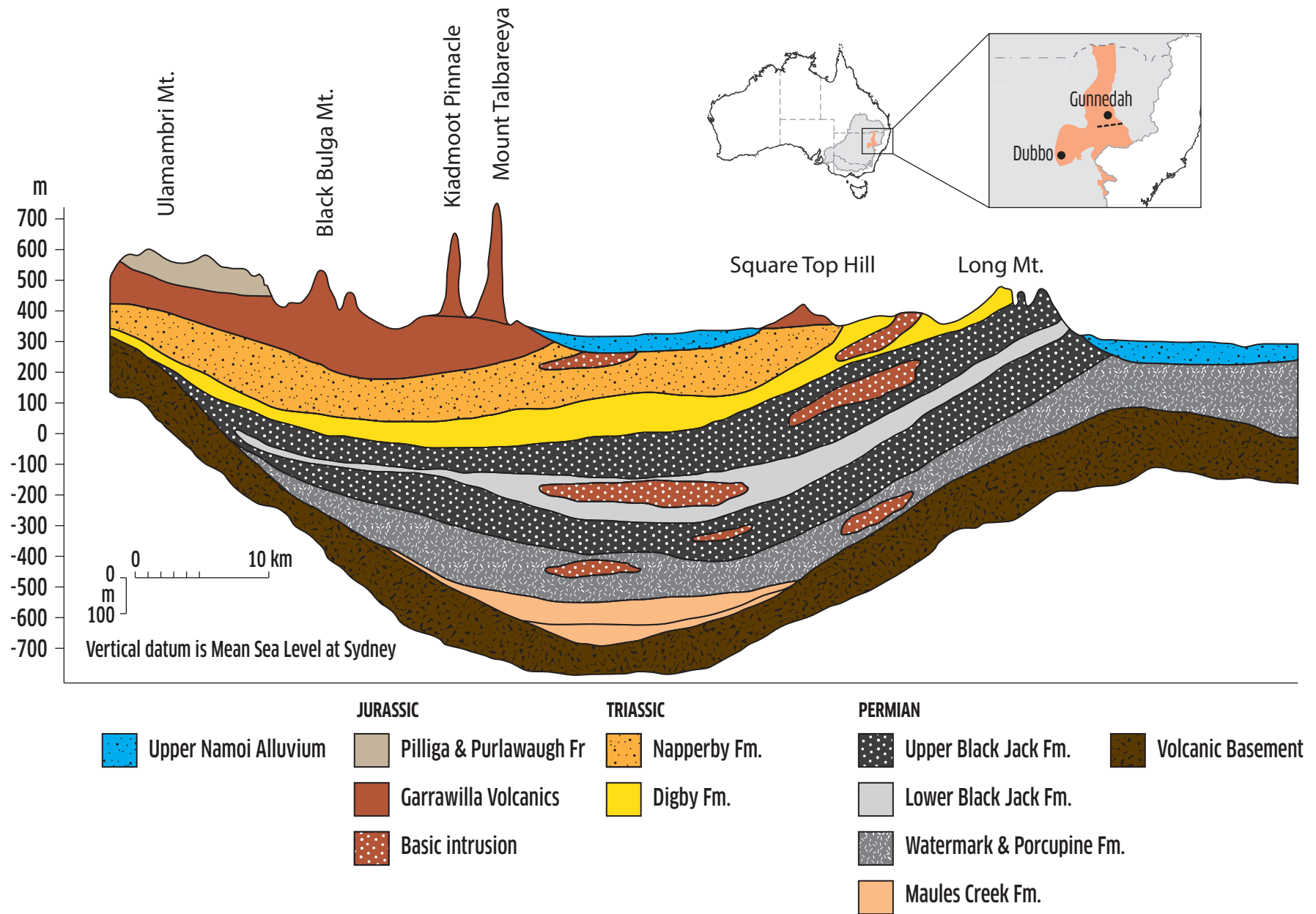


# EASTERN POROUS ROCK



East-west stylised conceptualisation of a cross section of the Gunnedah Basin. Modified from Fig. 18.3, Martin DJ, 1993, Igneous Intrusions. In Tadros NZ (Ed.), 1993, The Gunnedah Basin, New South Wales, Geological Survey of NSW, Memoir Geology 12.