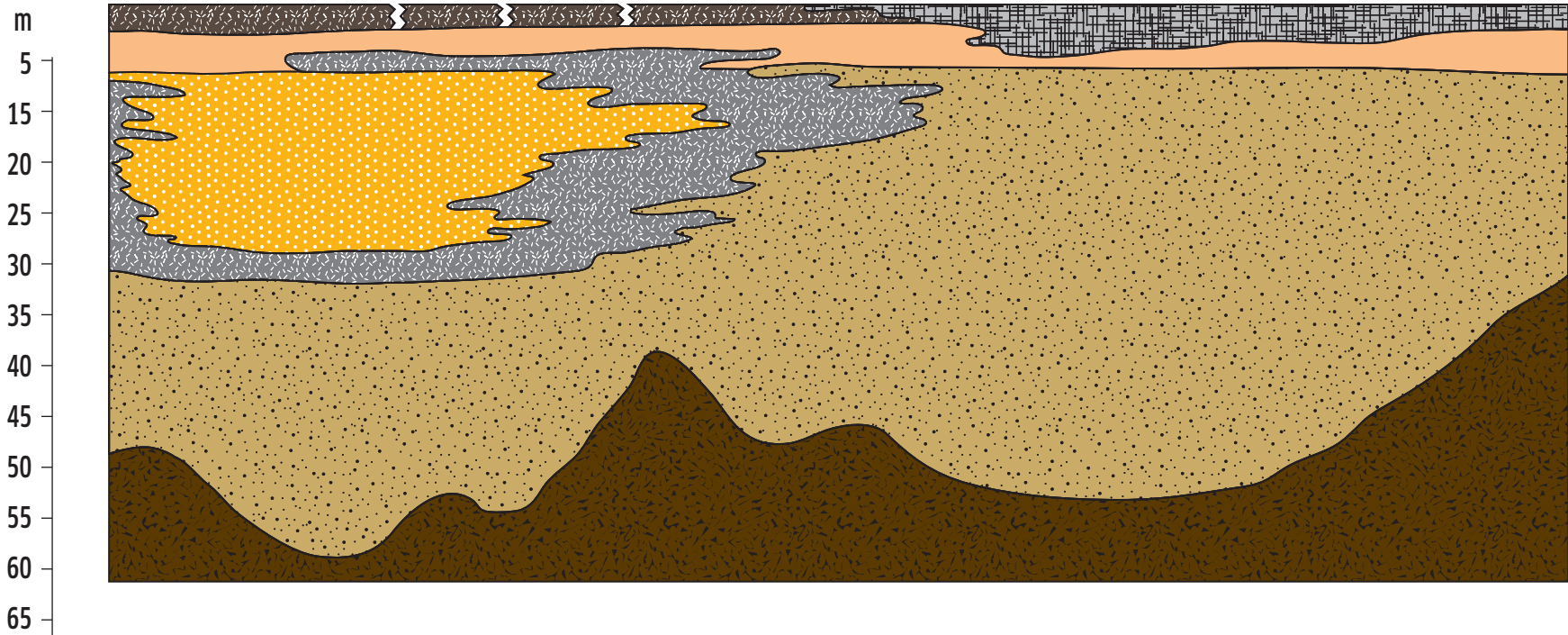
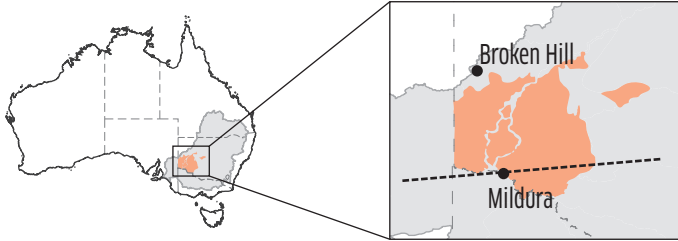


WESTERN POROUS ROCK



-  Norwest Bend Fm./Blanchetown Clay
-  Loxton-Parilla/Calivil/Pliocene sands aquifer
-  Bookpurnong/Murray GP (confining beds)
-  Pre-cainozoic Basement
-  Shepparton aquifer
-  Murray Group aquifer system
-  Renmark Group aquifer

East-west stylised conceptualisation of the regional aquifer systems of the Murray Basin. Modified from Fig. 172, Brown CM & Stephenson, 1991, Geology of the Murray Basin, Southeastern Australia, Department of Primary Industries and Energy; Bureau of Mineral Resources, Geology and Geophysics.