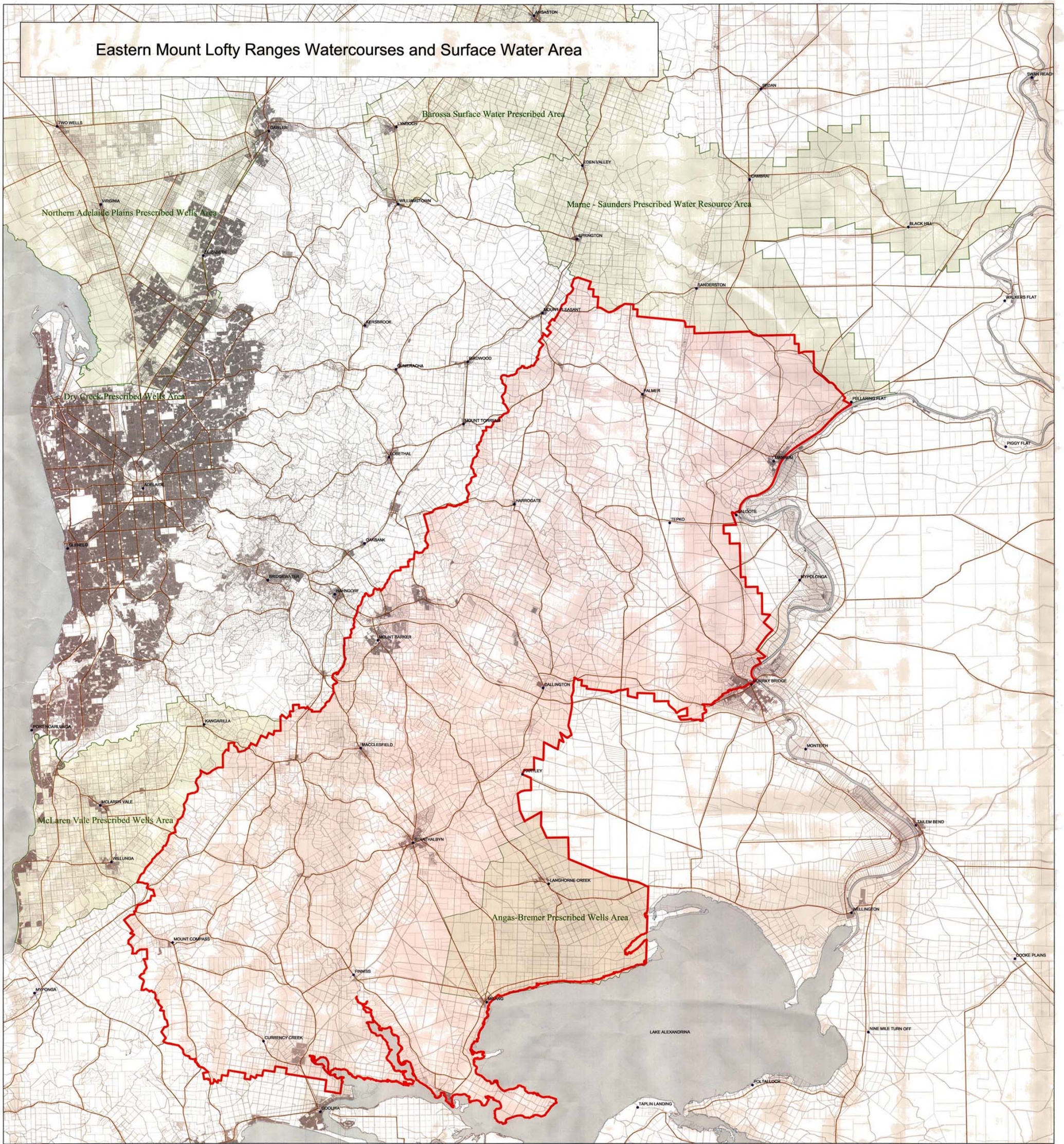
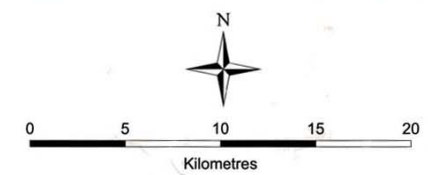


# Eastern Mount Lofty Ranges Watercourses and Surface Water Area



- Towns
- Roads
- ▭ Notice of Prohibition Area and Proposed Prescribed Watercourses and Surface Water Area
- ▭ Existing Prescribed Areas
- ▭ Cadastral Boundary



**COPYRIGHT**  
 © Department of Water, Land and Biodiversity Conservation 2002.  
 This work is Copyright. Apart from any use permitted under the Copyright Act 1968 (Cwth), no part may be reproduced by any process without prior written permission obtained from the Department of Water, Land and Biodiversity Conservation. Requests and enquiries concerning reproduction and rights should be directed to the Chief Executive, Department of Water, Land and Biodiversity Conservation, GPO Box 2534, Adelaide SA 5001.

**DISCLAIMER**  
 The Department of Water, Land and Biodiversity Conservation, its employees and servants do not warrant or make any representation regarding the use, or results of use of the information contained herein as to its correctness, accuracy, currency or otherwise. The Department of Water, Land and Biodiversity Conservation, its employees and servants expressly disclaim all liability or responsibility to any person using the information or advice contained herein.

Produced by: Resource Assessment Division  
 Department of Water, Land and Biodiversity Conservation  
 Geospatial Datum of Australia 1994  
 Date: 27th August 2003