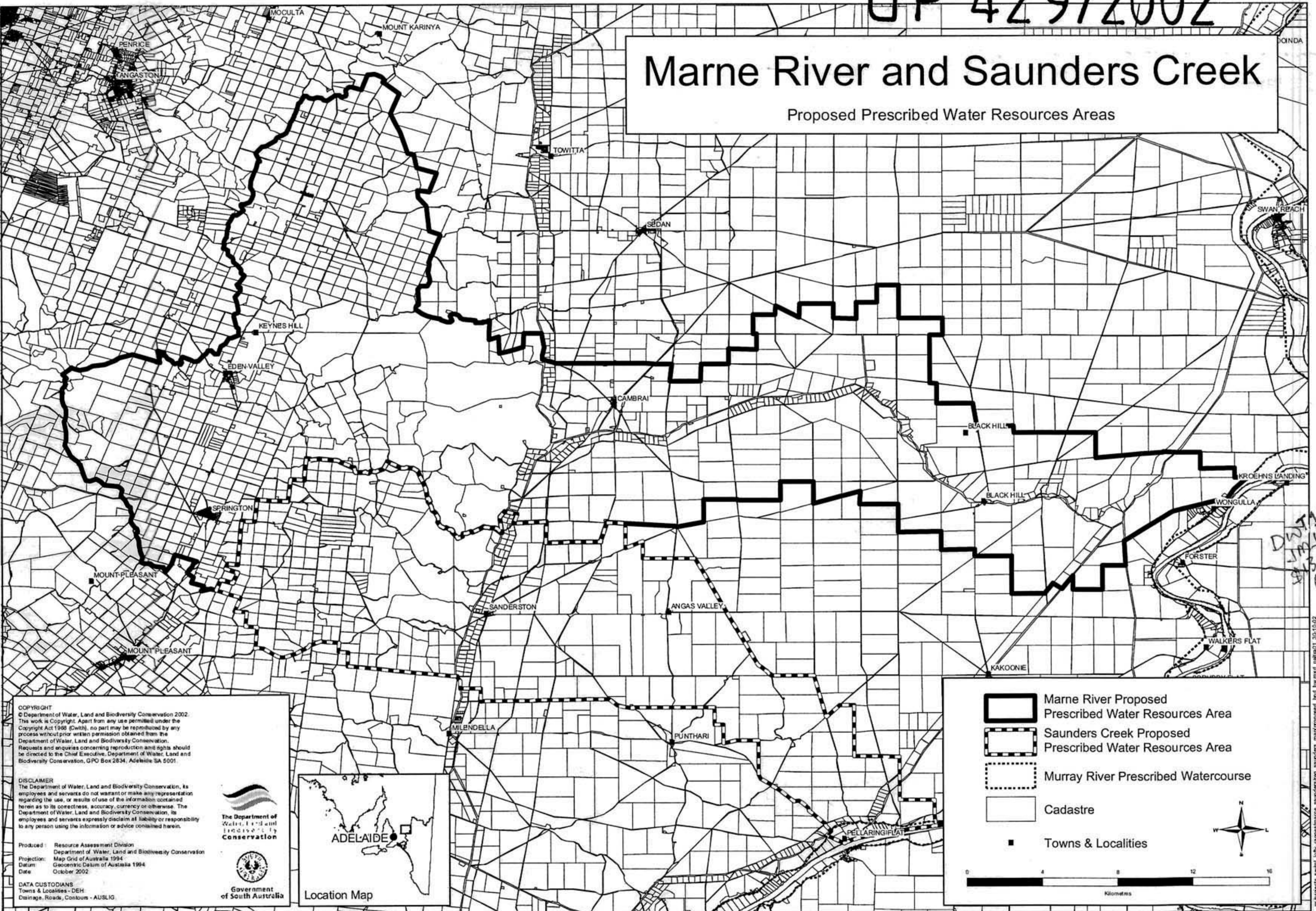


GP 429/2002

Marne River and Saunders Creek

Proposed Prescribed Water Resources Areas



DWTIP
JML
13:00
6/11/02

COPYRIGHT
 © Department of Water, Land and Biodiversity Conservation 2002.
 This work is Copyright. Apart from any use permitted under the Copyright Act 1969 (Cwth), no part may be reproduced by any process without prior written permission obtained from the Department of Water, Land and Biodiversity Conservation. Requests and enquiries concerning reproduction and rights should be directed to the Chief Executive, Department of Water, Land and Biodiversity Conservation, GPO Box 2834, Adelaide SA 5001.

DISCLAIMER
 The Department of Water, Land and Biodiversity Conservation, its employees and servants do not warrant or make any representation regarding the use, or results of use of the information contained herein as to its correctness, accuracy, currency or otherwise. The Department of Water, Land and Biodiversity Conservation, its employees and servants expressly disclaim all liability or responsibility to any person using the information or advice contained herein.

Produced: Resource Assessment Division
 Department of Water, Land and Biodiversity Conservation
 Projection: Map Grid of Australia 1994
 Datum: Geostatic Datum of Australia 1994
 Date: October 2002

DATA CUSTODIANS
 Towns & Localities - DEH
 Drainage, Roads, Contours - AUSLIG



	Marne River Proposed Prescribed Water Resources Area
	Saunders Creek Proposed Prescribed Water Resources Area
	Murray River Prescribed Watercourse
	Cadastral
	Towns & Localities

Scale: 0 4 8 12 16 Kilometres

North arrow