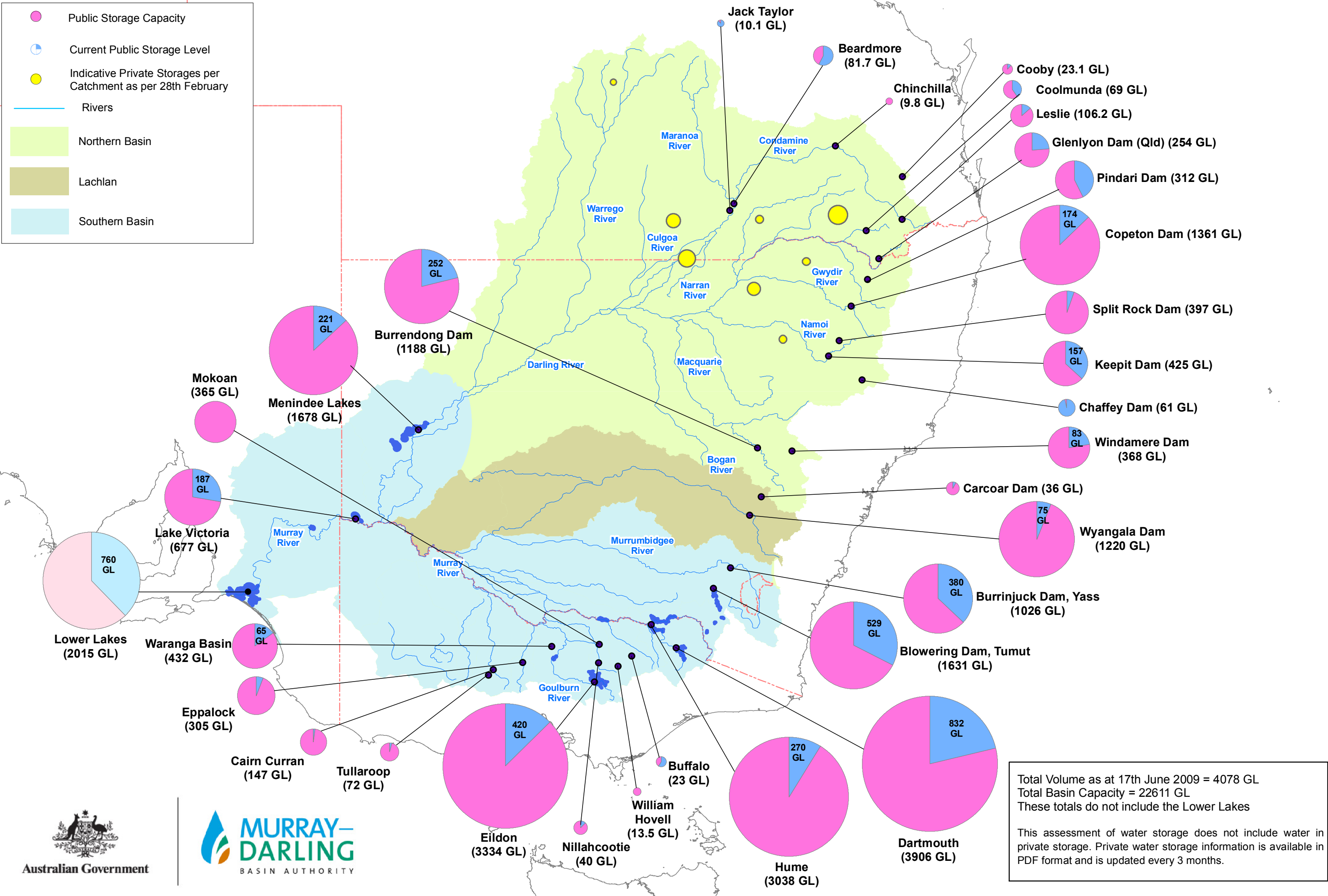
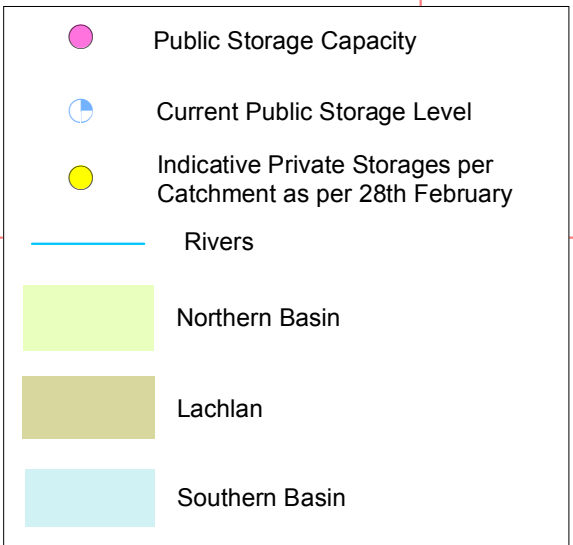


# Murray-Darling Basin Government Irrigation Storages – 17th June 2009



Total Volume as at 17th June 2009 = 4078 GL  
 Total Basin Capacity = 22611 GL  
 These totals do not include the Lower Lakes

This assessment of water storage does not include water in private storage. Private water storage information is available in PDF format and is updated every 3 months.

