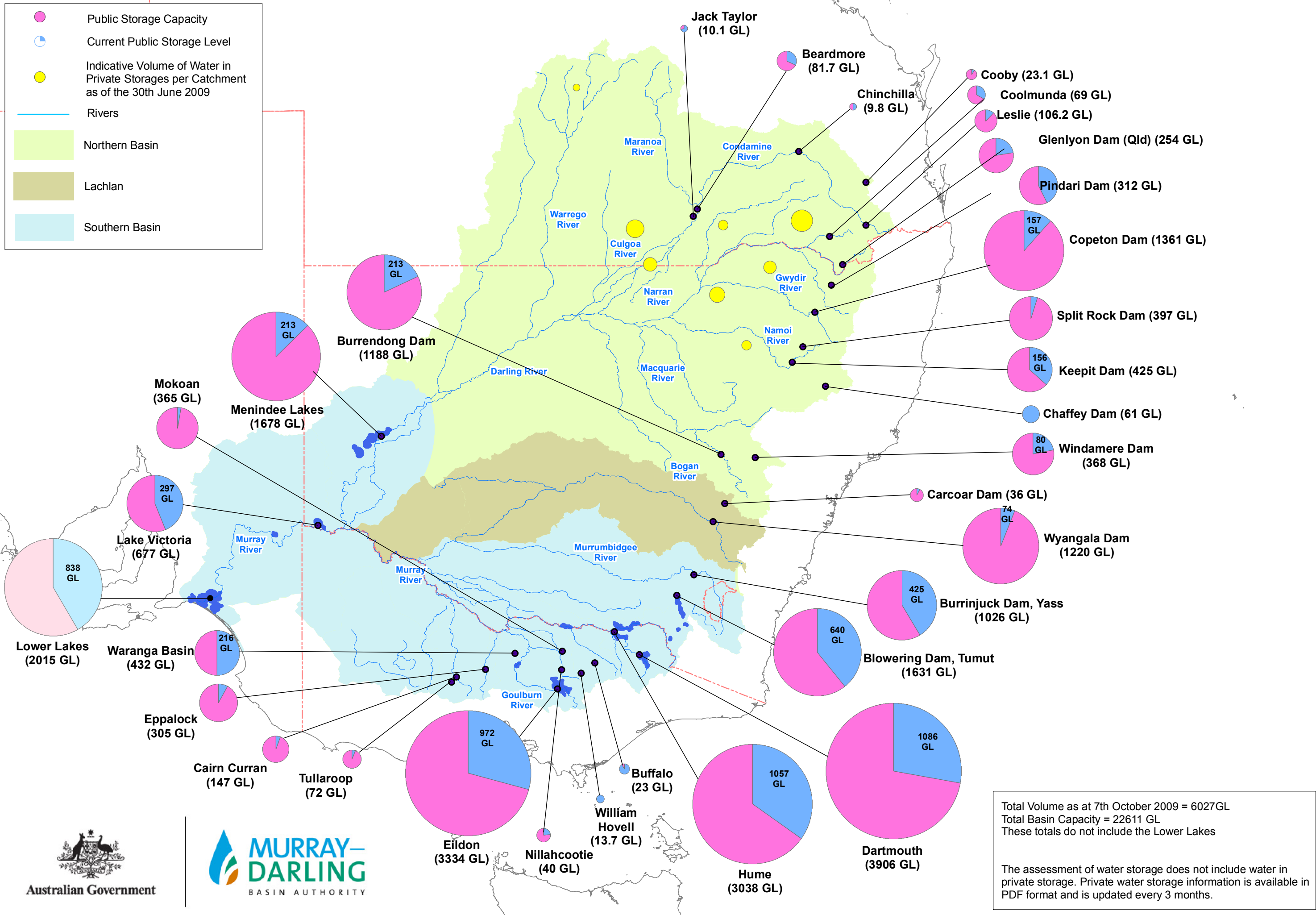
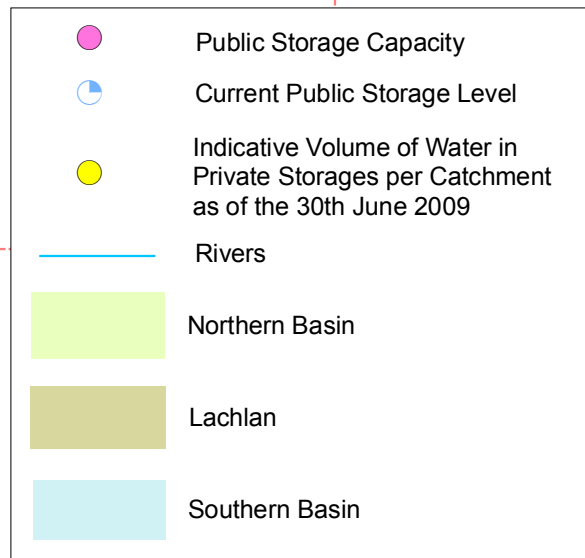


# Murray-Darling Basin Government Irrigation Storages – 7th October 2009



Total Volume as at 7th October 2009 = 6027GL  
 Total Basin Capacity = 22611 GL  
 These totals do not include the Lower Lakes

The assessment of water storage does not include water in private storage. Private water storage information is available in PDF format and is updated every 3 months.

