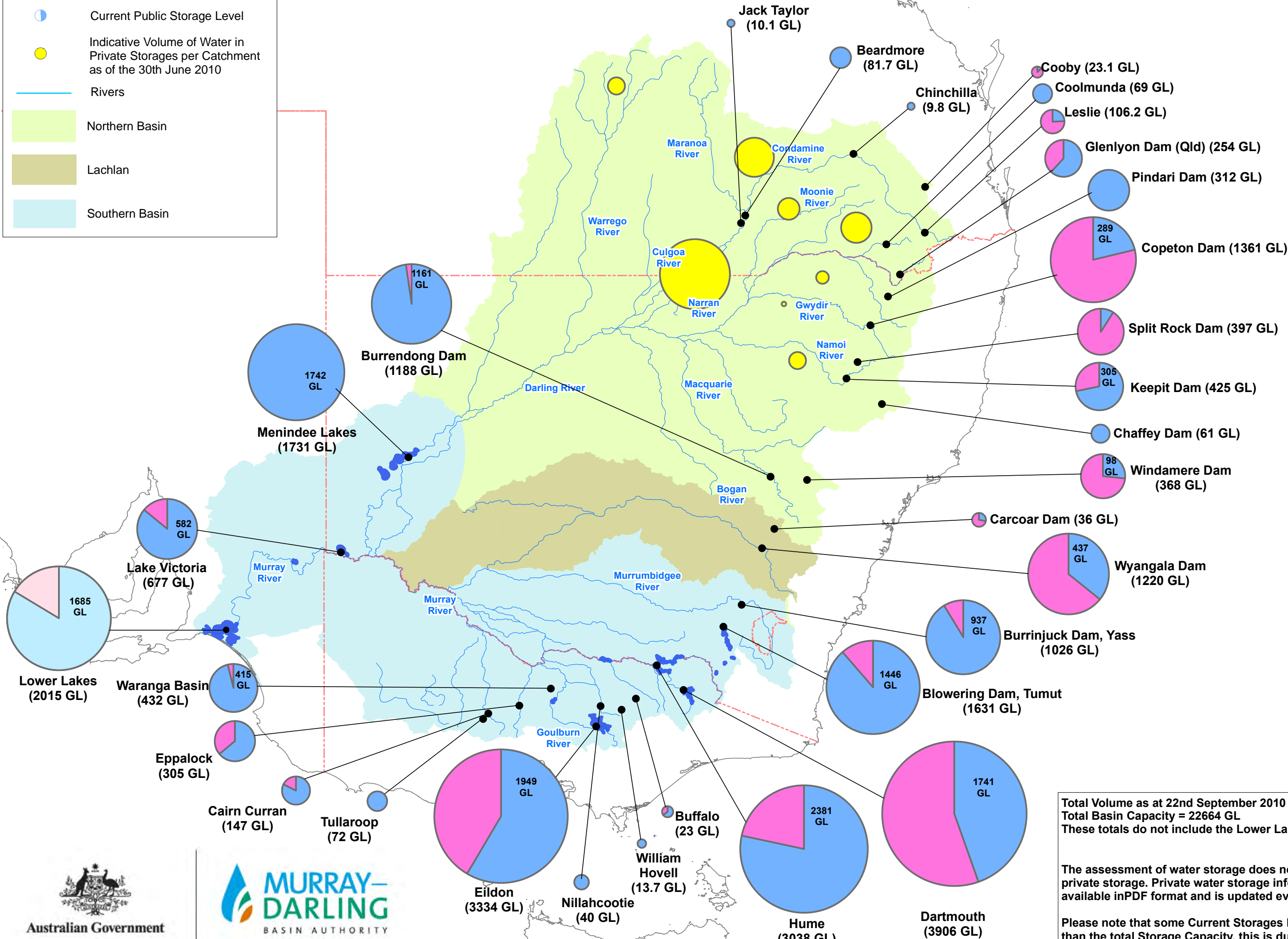
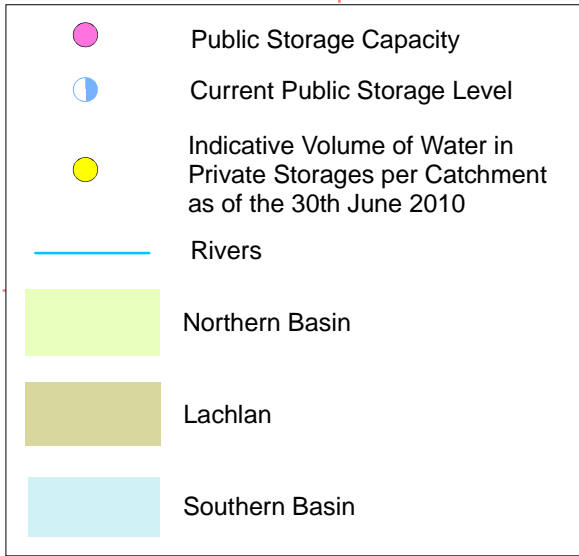


Murray-Darling Basin Government Irrigation Storages – 22nd September 2010



Total Volume as at 22nd September 2010 = 14725 GL
Total Basin Capacity = 22664 GL
 These totals do not include the Lower Lakes.

The assessment of water storage does not include water in private storage. Private water storage information is available in PDF format and is updated every 3 months.

Please note that some Current Storage Levels are higher than the total Storage Capacity, this is due to surcharge levels

