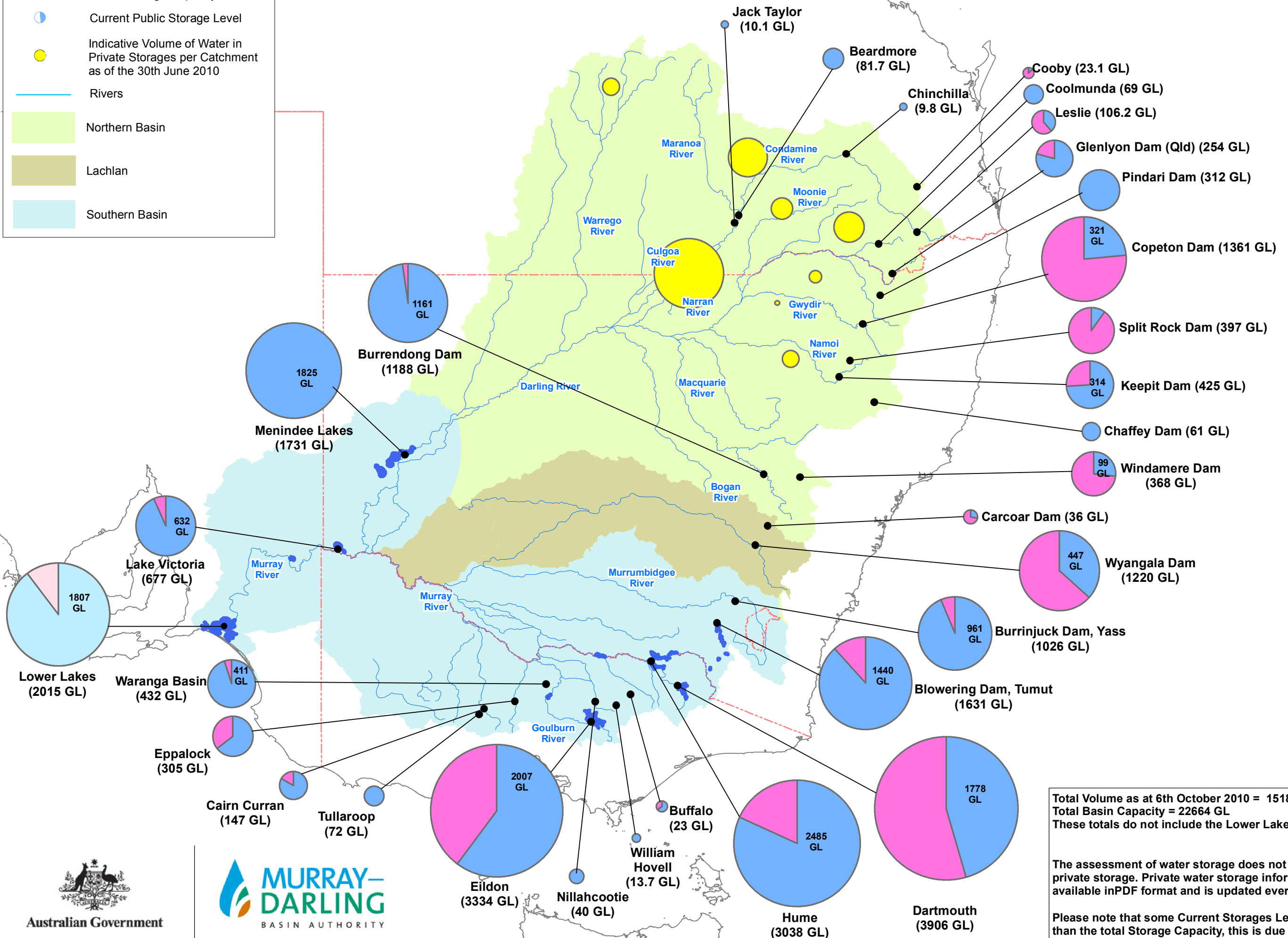
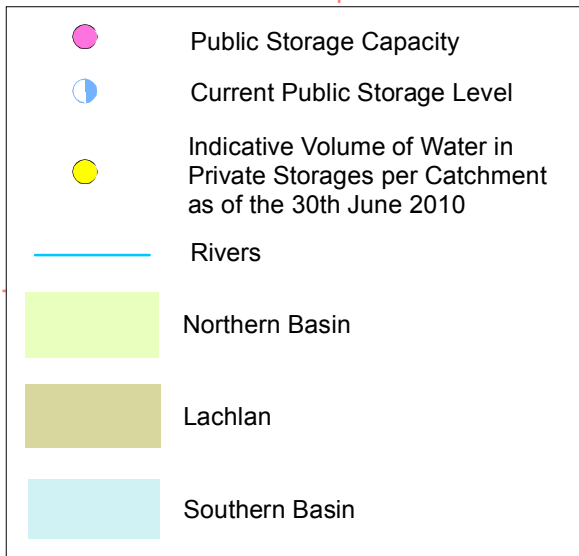


# Murray-Darling Basin Government Irrigation Storages – 6th October 2010



Total Volume as at 6th October 2010 = 15188 GL  
 Total Basin Capacity = 22664 GL  
 These totals do not include the Lower Lakes.

The assessment of water storage does not include water in private storage. Private water storage information is available in PDF format and is updated every 3 months.

Please note that some Current Storages Levels are higher than the total Storage Capacity, this is due to surcharge levels

