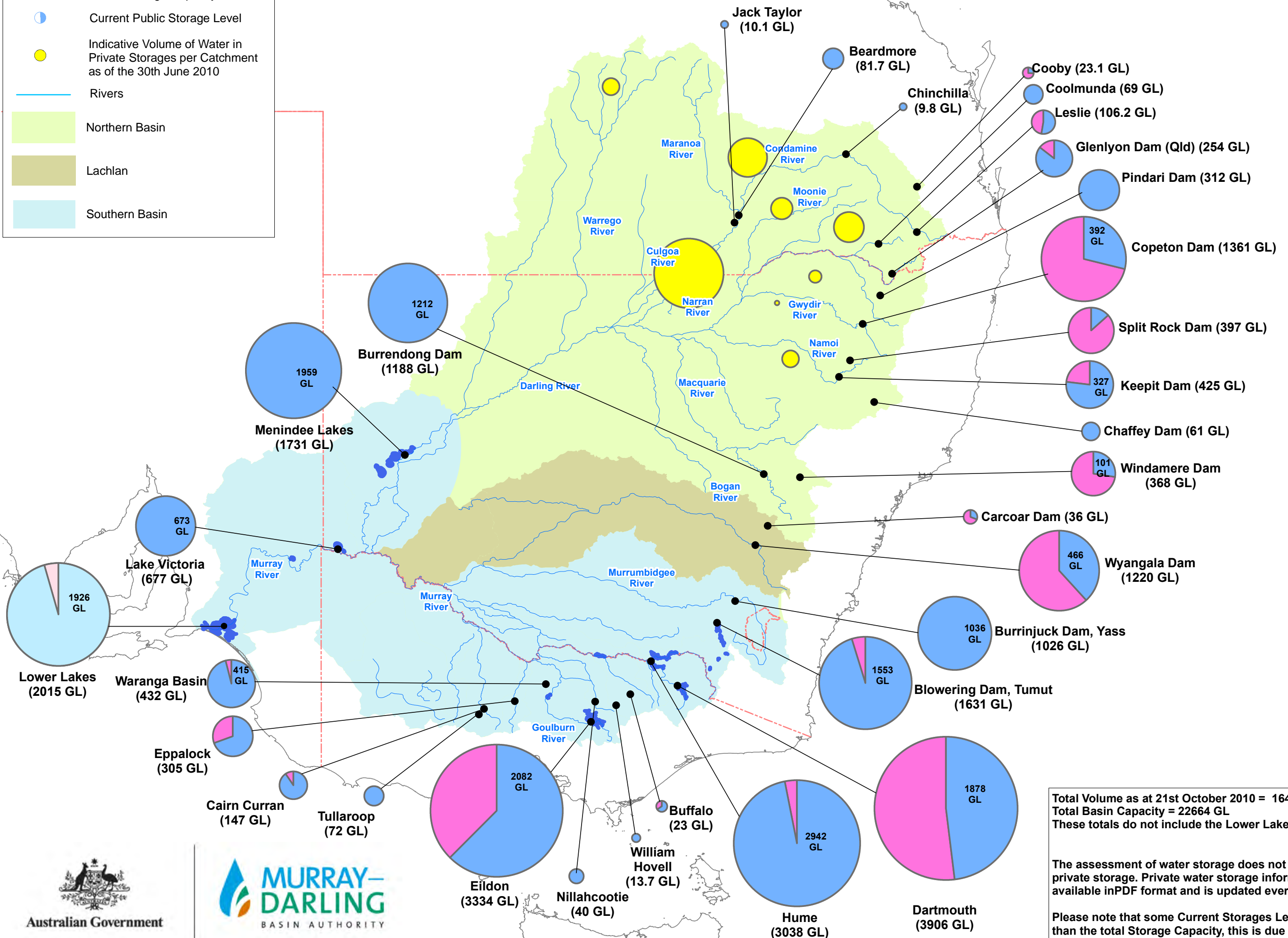
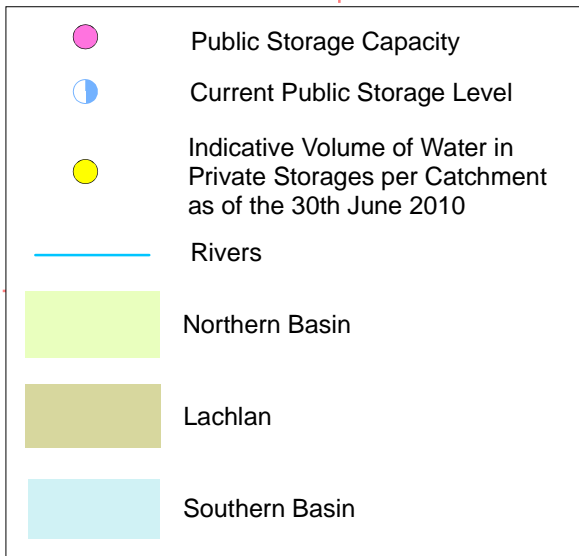


Murray-Darling Basin Government Irrigation Storages – 21st October 2010



Total Volume as at 21st October 2010 = 16412 GL
 Total Basin Capacity = 22664 GL
 These totals do not include the Lower Lakes.

The assessment of water storage does not include water in private storage. Private water storage information is available in PDF format and is updated every 3 months.

Please note that some Current Storages Levels are higher than the total Storage Capacity, this is due to surcharge levels

