



RIVER MURRAY WEEKLY REPORT

FOR THE WEEK ENDING WEDNESDAY, 17 APRIL 2013

Trim Ref: D13/14120

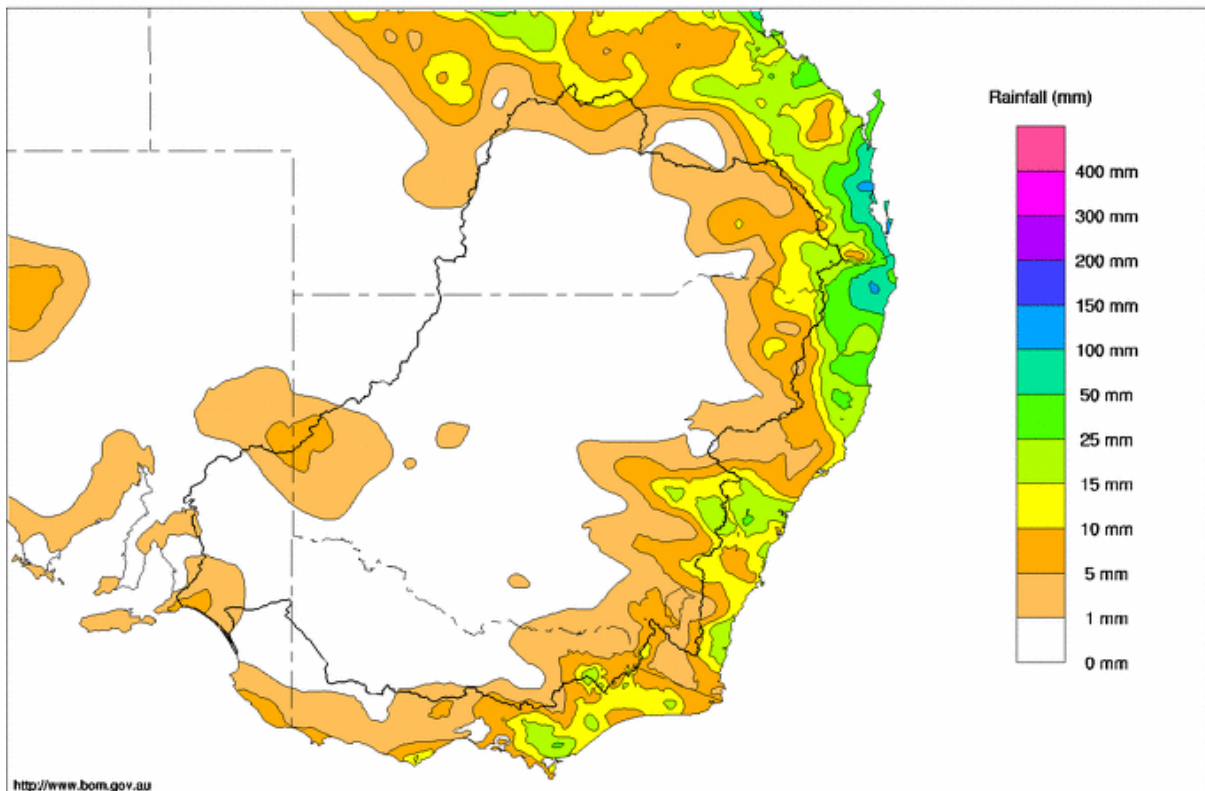
Rainfall and Inflows

Dry conditions continued across the Murray-Darling Basin this week, with very few locations recording more than 15 mm rainfall. In Queensland, the highest totals were 28 mm at Leslie Dam and 24 mm at Dalveen, while in NSW, Oberon recorded 36 mm and Chifley Dam 30 mm. Victoria's highest rainfall total, within the Basin, was Harrietville with 15 mm.

Flows in the upper Murray tributaries generally receded during the week, with the flow at Hinnomunjie, upstream of Dartmouth Reservoir, now about 430 ML/day compared with 750 ML/day last week. At Biggara, on the River Murray, the flow has receded from 640 ML/day to 580 ML/day. In the Ovens River, the flow at Bright is about 150 ML/day, while at Wangaratta, the flow is currently about 800 ML/day and rising, due to higher releases from Lake Buffalo.

On the Darling River, the flow at Bourke has receded to 11,500 ML/day, down from 23,500 ML/day last week. At Wilcannia, the flow is about 20,000 ML/day and is expected to rise slightly during the next 2–4 days, before rapidly receding.

Murray-Darling Rainfall Totals (mm) Week Ending 17th April 2013
Product of the National Climate Centre



Map 1 – Murray-Darling Basin rainfall for the week ending 17 April 2013 (Source: Bureau of Meteorology).

River Operations

MDBA active storage is currently 5,743 GL (67% capacity), which is a gain of 26 GL during the week.

At Dartmouth Reservoir, the storage volume reduced by 4 GL to 3,577 GL (93% capacity). The release from the reservoir continued to be decreased during the week and is now 500 ML/day at Colemans gauge. This flow will



remain steady for the next week before being increased to about 2,300 ML/day from Wednesday 24 April to Saturday 27 April. Releases during early May are expected to be about 350 ML/day.

The storage volume in Hume Reservoir continued a slow and steady decline, falling by 26 GL during the week to 1,422 GL (47% capacity). At Doctors Point, the flow is steady at about 11,500 ML/day and is expected to remain relatively steady during the forthcoming week.

At Yarrawonga Weir, the level in Lake Mulwala is 124.75 m AHD and the release is 7,000 ML/day. The diversions through Mulwala Canal and Yarrawonga Main Channel totalled 36 GL during the week, with similar volumes expected to be diverted next week.

The flow into the Edward River has been increased to 1,100 ML/day at the Edward River offtake while the flow through the Gulpa Creek offtake remains at 250 ML/day. Downstream of Stevens Weir, the Edward River flow is about 520 ML/day, while further downstream below the junction with Billabong Creek, the flow at Moulamein is 770 ML/day.

In the Goulburn River, the flow at McCoys Bridge has been steady during the week at about 900 ML/day. This flow is expected to remain steady until mid-May, if conditions remain dry.

Upstream of Torrumbarry Weir, the diversion through National Channel has recently been reduced from about 3,000 ML/day to about 2,100 ML/day. Consequently, the flow downstream of Torrumbarry Weir has increased slightly to about 4,000 ML/day. This release is expected to decrease slightly during the coming week.

At Barham, the flow is about 3,000 ML/day but is expected to rise to more than 3,700 ML/day in the coming week as the higher flows from Torrumbarry arrive. Downstream of Barham, inflows to the River Murray include 1,600 ML/day from the Wakool River at Kyalite and 730 ML/day from the Murrumbidgee River at Balranald—both these flows are receding.

At Euston Weir, the flow is currently about 5,200 ML/day but this flow is expected to fall below 4,000 ML/day during the coming week. A similar flow pattern is expected at Mildura.

Following normal operations practice during dry conditions, regulated river flows at many locations will be reduced toward minimums as the irrigation season draws to a close in mid-May. It is also possible that weir pools may be drawn down slightly to meet short-term demands while conserving as much water as possible in upstream storages such as Hume and Dartmouth Reservoirs. Further information will be provided in future Weekly Reports or, if necessary, in flow advices and media releases.

Continued high inflows have boosted the storage in the Menindee Lakes by 50 GL to 1,216 GL (70% capacity). The flow at Weir 32 will be increased to 9,000 ML/day by Friday 19 April (see attached flow advice). At Burtundy, the flow is currently 5,700 ML/day (3.5 m) and is expected to rise to about 7,600 ML/day (4.3 m) by 24 April.

At Wentworth Weir, the flow has just exceeded 10,000 ML/day and is expected to remain in the range 10,000–11,000 ML/day for the remainder of April.

The level in Lake Victoria started rising this week and is now 22.52 m AHD, which is a gain of 6 GL. The total storage volume is 202 GL (30% capacity). The lake is expected to continue rising at least until the end of May, when a volume of 350 GL is being targeted. The flow to South Australia is currently 7,500 ML/day but will be decreased to about 7,300 ML/day for the remainder of the month.

At the Lower Lakes, the average water level has been steady at 0.65 m AHD for the last week. The gates at Goolwa and Mundoo barrages were closed over the weekend and early this week to minimise the reverse flow of seawater into Lake Alexandrina but were re-opened when downstream conditions became favourable.

For media inquiries contact the Media Officer on 02 6279 0141

DAVID DREVERMAN
Executive Director, River Management



Week ending Wednesday 17 Apr 2013

Water in Storage

MDBA Storages	Full Supply Level (m AHD)	Full Supply Volume (GL)	Current Storage Level (m AHD)	Current Storage		Dead Storage (GL)	Active Storage (GL)	Change in Total Storage for the Week (GL)	
				(GL)	%				
Dartmouth Reservoir	486.00	3 856	481.65	3 577	93%	71	3 506	-4	
Hume Reservoir	192.00	3 005	182.36	1 422	47%	23	1 399	-26	
Lake Victoria	27.00	677	22.52	202	30%	100	102	+6	
Menindee Lakes		1 731*		1 216	70%	(480 #)	736	+50	
Total		9 269		6 417	69%	--	5 743	+26	
Total Active MDBA Storage							67% ^		

Major State Storages

Burrinjuck Reservoir	1 026	389	38%	3	386	-1
Blowering Reservoir	1 631	989	61%	24	965	+14
Eildon Reservoir	3 334	2 373	71%	100	2 273	-40

^ % of total active MDBA storage

* Menindee surcharge capacity 2050 GL

NSW takes control of Menindee Lakes when storage falls below 480 GL, and control reverts to MDBA when storage next reaches 640 GL

** All Data is rounded to nearest GL **

Snowy Mountains Scheme

Snowy diversions for week ending 16 Apr 2013

Storage	Active Storage (GL)	Weekly Change (GL)	Diversions (GL)	This Week	From 1 May 2012
Lake Eucumbene - Total	1 846	-44	Snowy-Murray	+34	826
Snowy-Murray Component	706	-31	Tooma-Tumut	+1	209
Target Storage	1 340		Net Diversion	34	617
			Murray 1 Release	+38	1 096

Major Diversions from Murray and Lower Darling (GL) *

New South Wales	This Week	From 1 July 2012	Victoria	This Week	From 1 July 2012
Murray Irrig. Ltd (Net)	25.3	1429	Yarrawonga Main	11.7	360
Wakool Sys Allowance	2.3	69	Torrumbary System	0.1	515
Western Murray Irrigation	0.5	28	Sunraysia Pumping	0.9	119
Licensed Pumps	6.0	244	Licensed pumps -	2.5	54
Lower Darling	0.8	118	Licensed pumps -	2.5	275
TOTAL	34.9	1888	TOTAL	17.7	1323

* Figures derived from Estimates and Monthly Data. Please note that not all data may have been available at the time of creating this report.

** All Data is rounded to nearest 100 ML for the above**

Flow to South Australia (GL)

Entitlement	135.0 *	
Flow this week	51.5	(7 400 ML/day)
Flow so far	126.5	
Flow last month	261.6	

* Flow to SA will be greater than normal entitlement for this month due to traded environmental water.

Salinity (EC)

(microSiemens/cm @ 25° C)

	Current	Average over the last week	Average since 1 August 2012
Swan Hill	110	110	100
Euston	160	140	130
Red Cliffs	150	140	140
Merbein	160	160	160
Burtundy (Darling)	460	460	470
Lock 9	310	330	260
Lake Victoria	390	360	260
Berri	410	400	310
Waikerie	440	440	330
Morgan	440	430	330
Mannum	510	520	340
Murray Bridge	540	520	350
Milang (Lake Alex.)	560	550	430
Poltalloch (Lake Alex.)	530	520	360
Meningie (Lake Alb.)	3 560	3 490	3 450
Goolwa Barrages	1 120	1 160	1 460



River Levels and Flows

River Murray	Minor Flood Stage (m)	Gauge Height		Flow (ML/day)	Trend	Average Flow this Week (ML/day)	Average Flow last Week (ML/day)
		local (m)	(m AHD)				
Khancoban	-	-	-	7 070	S	5 180	4 350
Jingellic	4.0	1.99	208.51	7 130	R	6 310	5 270
Tallandoon (Mitta Mitta River)	4.2	1.51	218.40	710	F	1 590	5 700
Heywoods	5.5	2.82	156.45	11 170	F	11 020	12 100
Doctors Point	5.5	2.73	151.20	11 450	F	11 520	12 800
Albury	4.3	1.70	149.14	-	-	-	-
Corowa	3.8	2.65	128.67	11 650	R	11 700	12 170
Yarrowonga Weir (d/s)	6.4	1.26	116.30	6 990	F	7 240	6 990
Tocumwal	6.4	1.92	105.76	7 310	S	7 210	7 210
Torrumbarry Weir (d/s)	7.3	1.52	80.06	4 030	R	3 390	4 210
Swan Hill	4.5	0.78	63.70	2 990	F	3 220	4 330
Wakool Junction	8.8	2.13	51.25	4 670	F	5 240	6 100
Euston Weir (d/s)	8.8	1.14	42.98	5 200	F	5 390	5 840
Mildura Weir (d/s)	-	-	-	5 600	F	5 480	5 350
Wentworth Weir (d/s)	7.3	3.12	27.88	10 090	R	9 520	8 210
Rufus Junction	-	3.61	20.54	6 770	R	6 680	6 640
Blanchetown (Lock 1 d/s)	-	0.70	-	6 000	R	5 960	6 230
Tributaries							
Kiewa at Bandiana	2.7	0.86	154.09	390	R	410	490
Ovens at Wangaratta	11.9	8.02	145.70	790	R	710	780
Goulburn at McCoys Bridge	9.0	1.52	92.94	910	S	870	920
Edward at Stevens Weir (d/s)	-	0.77	80.54	520	F	530	590
Edward at Liewah	-	1.41	56.79	790	F	910	960
Wakool at Stoney Crossing	-	1.54	55.03	680	F	810	810
Murrumbidgee at Balranald	5.0	1.15	57.11	730	F	840	590
Barwon at Mungindi	-	3.64	-	1 230	F	1 210	1 160
Darling at Bourke	-	5.54	-	11 500	F	18 740	23 080
Darling at Burtundy Rocks	-	3.51	-	5 710	R	5 030	3 910

Natural Inflow to Hume	590	890
------------------------	-----	-----

Weirs and Locks

Pool levels above or below Full Supply Level (FSL)

Murray	FSL (m AHD)	u/s	d/s		FSL (m AHD)	u/s	d/s
Yarrowonga	124.90	-0.15	-	No. 7 Rufu	22.10	+0.06	+1.30
No. 26 Torrumbarry	86.05	+0.00	-	No. 6 Murt	19.25	-0.00	+0.20
No. 15 Euston	47.60	-0.10	-	No. 5 Renr	16.30	+0.01	+0.28
No. 11 Mildura	34.40	+0.06	+0.11	No. 4 Book	13.20	+0.01	+0.82
No. 10 Wentworth	30.80	+0.06	+0.48	No. 3 Over	9.80	+0.02	+0.33
No. 9 Kulnine	27.40	+0.05	+0.11	No. 2 Wai	6.10	+0.05	+0.27
No. 8 Wangumma	24.60	+0.10	+0.13	No. 1 Blan	3.20	+0.05	-0.05

Lower Lakes

FSL = 0.75 m AHD

Lake Alexandrina average level for the past 5 days (m AHD)	0.65
--	------

Barrages

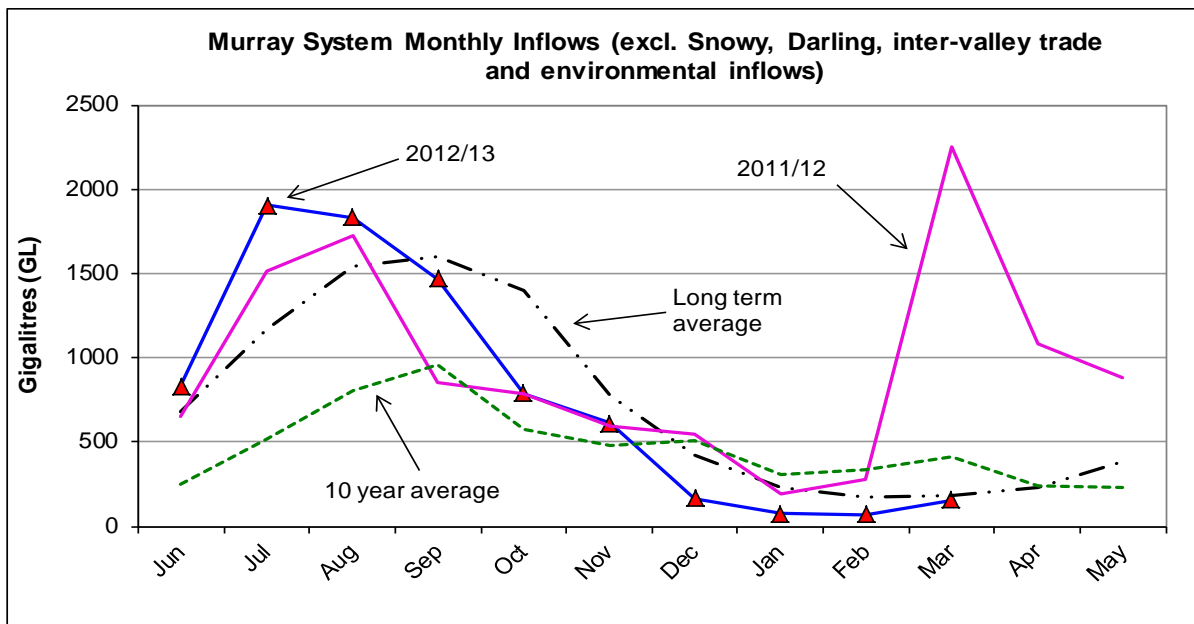
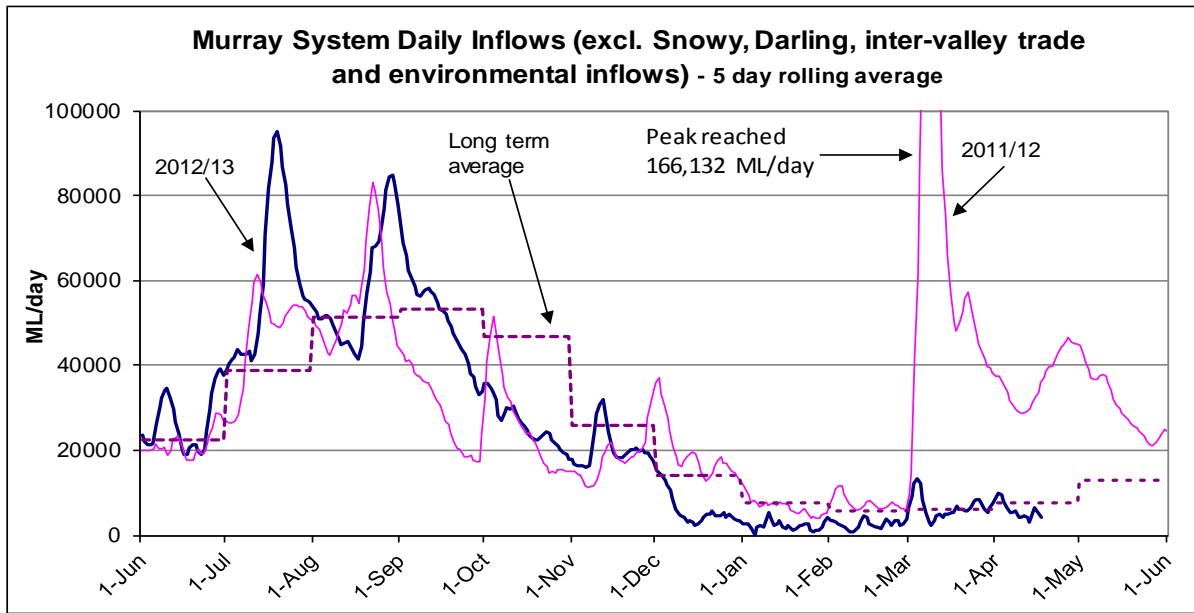
Fishways at Barrages

	Openings	Level (m AHD)	No. Open	Rock Ramp	Vertical Slot
Goolwa	28 openings	0.66	3	-	Open
Mundoo	26 openings	0.65	1	-	-
Boundary Creek	6 openings	-	0.1	-	-
Ewe Island	111 gates	-	All closed	-	-
Tauwitchere	322 gates	0.65	8	Open	Open

AHD = Level relative to Australian Height Datum, i.e. height above sea level



Week ending Wednesday 17 April 2013



State Allocations (as at 17 April 2013)

NSW - Murray Valley

High security	100%
General security	100%

Victoria - Murray Valley

High reliability	100%
Low reliability	0%

NSW - Murrumbidgee Valley

High security	100%
General security	100%

Victoria - Goulburn Valley

High reliability	100%
Low reliability	0%

NSW - Lower Darling

High security	100%
General security	100%

South Australia - Murray Valley

High security	100%
---------------	------

NSW : <http://www.water.nsw.gov.au/About-us/Media-releases/media/default.aspx>
 VIC : <http://www.nvrn.net.au/allocations/current.aspx>
 SA : <http://www.waterforgood.sa.gov.au/category/news/>

Lower Darling River Flow advice



16 April 2013

Flows to increase at Weir 32

Flows at Weir 32 are set to increase from tomorrow, Wednesday 17 April from about 8,000 ML/day (2.9m) to about 9,000 ML/day (3.3 m) by Friday 19 April.

This is due to water being released from Menindee Lakes to the Lower Darling to meet downstream demands and transfer water to Lake Victoria.

It is expected the extra release will have little impact on water levels at Menindee Lakes due to increased inflows from the Darling River. Storage levels at Menindee are currently at 70% and are expected to rise for the remainder of April.

NSW Office of Water has indicated the lakes will continue to be managed to maximise the storage in Lakes Wetherell and Pamamaroo over winter (see www.water.nsw.gov.au/Water-management/Water-availability/Flood-management/default.aspx#menindee).

It is expected that the release at Weir 32 will continue at around the same rate into early May and then decrease as seasonal demands lessen. The release may be reduced earlier if demands lessen or there are wetter conditions in the Murray.

At Burtundy, the flow is currently about 5,300 ML/day (3.3 m) and rising. The flow is expected to continue to increase to about 7,600 ML/day (4.3 m) by 24 April.

Landholders and river users, including pumpers, should take into account the changing flow rates along the lower Darling River and make necessary adjustments to their activities.

Forecast flows are also available on the MDBA website (see www.mdba.gov.au/water/river_info and click on 'storage volumes & releases' for Menindee storage volume and Weir 32 flows or 'river flows & levels' for Burtundy flows).

This flow forecast is dependent on weather conditions and operational requirements. A further flow advice will be issued if there are any significant variations to these planned releases.

ENDS

For media information contact the MDBA Media Office at media@mdba.gov.au or 02 6279 0141.

For other information contact MDBA at inquiries@mdba.gov.au or 02 6279 0100.

 Follow the MDBA http://twitter.com/MD_Basin_Auth

Trim: D13/13808